

A faded background image of a man and a woman smiling and taking a photo with a smartphone. The woman is in the foreground, holding the phone up, and the man is behind her, also smiling.

Western Digital

External USB Hard Drive
Dual-option Backup
USB 2.0

User Manual





Western Digital

WD Dual-option Backup External USB Hard Drive

User Manual

Information furnished by Western Digital is believed to be accurate and reliable. However, no responsibility is assumed by Western Digital for its use nor for any infringement of patents or other rights of third parties which may result from its use. No license is granted by implication or otherwise under any patent or patent rights of Western Digital. Western Digital reserves the right to change specifications at any time without notice.

© 2004 Western Digital Technologies, Inc. All rights reserved.

Western Digital and the Western Digital logo are registered trademarks and WD, WD Dual-option, and Safe Shutdown are trademarks of Western Digital Technologies, Inc. Retrospect and the Dantz logo are registered trademarks of Dantz Development Corporation. Other marks may be mentioned herein that belong to other companies.

2779-001014-A00 06/04

Table of Contents

1 Getting Started

Kit Contents	1
System Requirements.....	1
Updating Your Operating System	2
Recording Your Drive Information	2
Registering Your Product.....	3
Handling Precautions.....	3

2 Setting Up

Windows 98SE/Me/2000/XP	4
Macintosh OS v9.2.2.....	6
Macintosh OS X v10.2.8+	7

3 Connecting the Drive

Connect the Cables	8
Formatting the Drive.....	9
Using Safe Shutdown.....	9
WD Button Manager.....	9

4 Using the Backup Software

Manual Backup	10
Changing Your Manual Backup Settings	12
Automatic Backup	13
Changing Your Automatic Backup Settings	16
Restoring Files From a Backup.....	16
Additional Features of Retrospect Express	16

5 Positioning the Drive

Installing the Drive Stands.....	17
Installing the Feet	17

6 Disconnecting the Drive

Windows Users	18
Macintosh Users	19
Removing Retrospect Express	19
Removing WD Button Manager	19

7 Troubleshooting

Frequently Asked Questions - USB Information	20
Frequently Asked Questions - Installation	21
WD Service and Support	22

8 Appendix

Regulatory Compliance	23
Agency Approvals.	23
Radio Frequency Interference Statement	23
Warranty Information	24
Obtaining Service	24
One-Year Limited Warranty	24

1

Getting Started

Thank you for purchasing the WD Dual-option backup external USB hard drive. Hi-speed storage, conveniently placed buttons and easy-to-use backup features make this external drive an ideal solution for that much-needed additional storage and a perfect place to back up your valuable data, music, photos, and movies. This user manual provides step-by-step installation instructions and other important information regarding your WD product. For the latest Western Digital product information and news, visit our Web site at www.westerndigital.com.

Kit Contents

- WD Dual-option Backup external USB 2.0 hard drive
- 6 ft. (1.8m) USB 2.0 certified cable
- Installation CD with Dantz® Retrospect® Express backup software and detailed user manuals
- AC adapter with power cord
- Quick Install Guide
- Vertical stands
- Feet for horizontal placement



System Requirements

Note: It is recommended that you install the latest service pack (SP) and updates to obtain the highest performance and reliability. See page 2 for direct links.

Windows®

- Available USB 2.0 or 1.1 port*
- Windows 98SE/Mc/2000/XP

Macintosh®

- Available USB 2.0 or 1.1 port*
- Mac® OS v9.2.2 or Mac OS X v10.2.8+

**USB 2.0 host required for Hi-Speed USB 2.0 performance. USB 2.0 is highly recommended because of the significant reduction in file transfer time compared to USB 1.1.*

Note: To determine whether your system supports USB 2.0, see "USB Information" on page 20.

Updating Your Operating System

Windows

Updating your operating system using Windows Update (Start > Windows Update) or go to *windowsupdate.microsoft.com*. The following are direct links:

- Windows XP Service Pack 1
<http://www.microsoft.com/WindowsXP/pro/downloads/servicepacks/sp1/express.asp>
- Availability of Windows Service Pack 1 USB 1.1 and 2.0 Update
<http://support.microsoft.com/?kbid=822603>
- Windows 2000 Service Pack 4
<http://www.microsoft.com/windows2000/downloads/servicepacks/sp4/default.asp>

Macintosh

Go to the Apple menu and select **Software Update**. For more information regarding updating your system, visit *<http://www.apple.com/macosx>*.

Recording Your Drive Information

IMPORTANT: Do not remove, tear, or damage the tape seal or any labels from the drive; these actions will void the warranty.

In the table that follows, enter the serial number, model number, and purchase date for your new Western Digital product. The complete serial number and model number are on the large label located on the back panel of the unit. You will need this information for setup and technical support.

Serial Number:	
Model Number:	Purchase Date:

Registering Your Product

Register online now at <https://www.wdc.com/en/products/registration>.

Handling Precautions

IMPORTANT: This product contains no user-serviceable parts. Refer servicing to authorized WD personnel or an authorized WD service center only.

Western Digital products are precision instruments and should be handled with care during unpacking and installation. These drives may be damaged by rough handling, shock, or vibration. Be aware of the following precautions when unpacking and installing your external hard drive:

- Do not unpack the unit until you are ready to install it.
- Do not drop or jolt the drive.
- The unit should not be moved during drive activity.
- The unit is not intended as a portable device.
- Do not attempt to open the drive and service it yourself. Removing the cover may expose you to harmful electrical voltages and will void the warranty.
- Do not open the external hard drive case or your warranty is void.
- To allow proper ventilation, do not block the air slots on the underside, top, or rear of the enclosure. Do not stack any objects on top of the drive that may block ventilation.

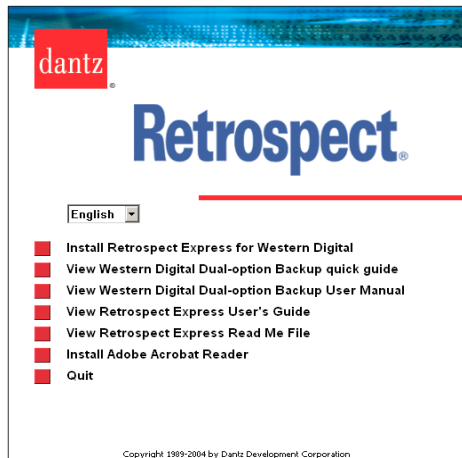
2

Setting Up

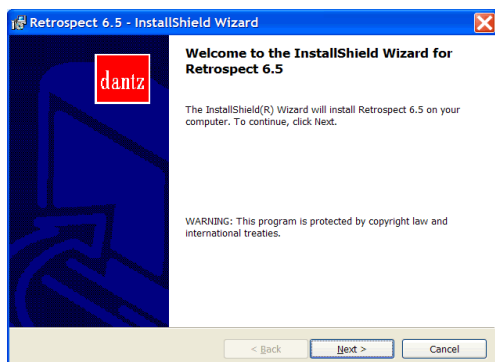
The installation CD contains the Retrospect Express backup software as well as important drivers for your WD Dual-option backup external USB drive. Carefully follow the appropriate procedure for your operating system.

Windows 98SE/Me/2000/XP

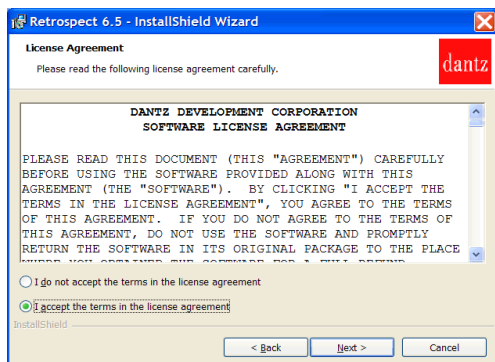
1. Insert the installation CD into your CD-ROM drive. The program will autorun and display a setup menu. Select the option to **Install Retrospect Express for Western Digital**.



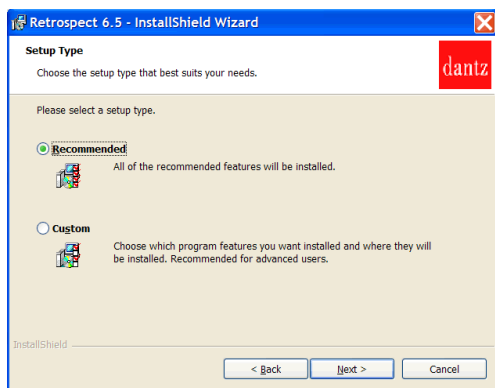
2. Retrospect Express Installer launches and displays the following window:



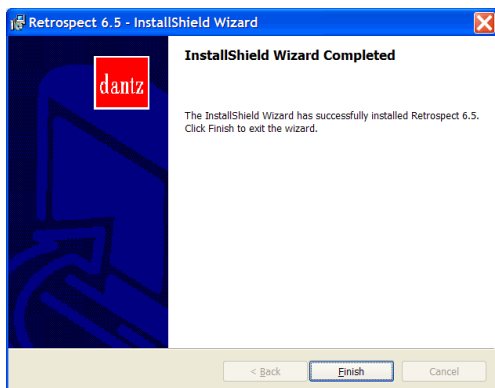
3. The license agreement screen will display. To proceed, select **I accept the terms in the license agreement** and click **Next**.



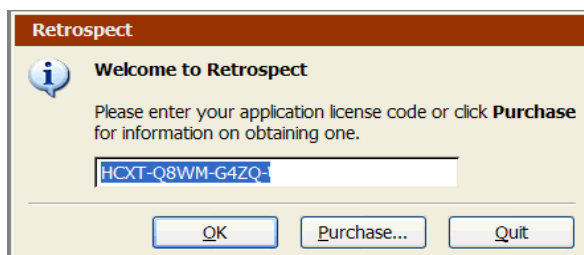
4. In the next screen, select the **Recommended** installation option and click **Next**.



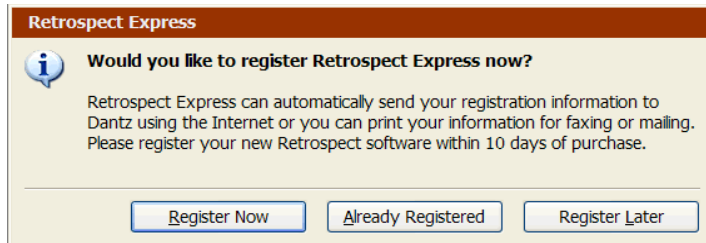
5. After installation is complete, click **Finish**.



6. Launch Retrospect Express from the **Start** menu. Go to **Start > Program Files > Retrospect > Retrospect 6.5**. The software immediately asks you for a license code. Since your Western Digital edition has already been licensed, the license code field is automatically filled in. Click **OK**.



7. In the next screen, you will be prompted to register Retrospect Express. Select **Register Now** to complete the registration information and click either the option to e-mail, or print and fax the information.



8. Proceed to "Connecting the Unit" on page 8.

Macintosh OS v9.2.2

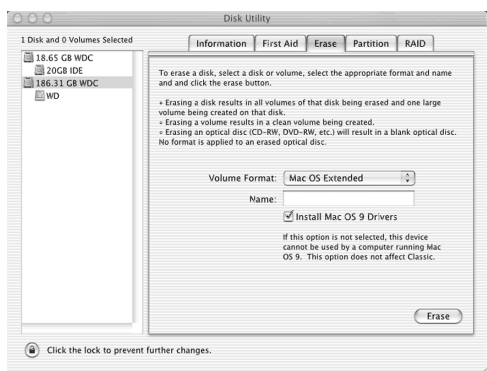
IMPORTANT - Macintosh users only: You must reinitialize the Western Digital drive to HFS Extended format (or other Mac OS drive formats) prior to using the installation CD. Skip to page 8 to connect the unit; then follow the steps below to format and set up the drive.

1. To format or reinitialize the drive, select **Control Panel > Extensions Manager** from the Apple menu.
2. Disable **File Exchange** from the extensions list by clearing the adjacent check box and click **Restart**.
3. After restart, a message appears asking you to initialize the drive. Enter a name, select **Mac OS Extended** from the menu, and click **Initialize**.
4. Click **Continue** to confirm drive initialization. A hard drive icon with the name you assigned will appear on the desktop after the formatting process is completed. To re-enable **File Exchange**, select the check box in **Extensions Manager** and click **Restart**.
5. After restart, insert the installation CD into your CD-ROM drive.
6. A Retrospect Express CD icon will appear on the desktop screen. Double-click on the CD icon to access its contents. Double-click on the Retrospect Express Installer icon to begin setup.
7. Click the button to accept the license agreement in the next window and follow the on-screen instructions to complete the install. After the installation is complete, go to the **Applications** folder and launch Retrospect Express.
8. Retrospect Express will ask you to personalize your software copy. Complete the fields for your name and organization, accept the included license code, and click **OK**.
9. In the next screen, you will be prompted to register Retrospect Express. Select **Register Now** to complete the registration information and click either the option to e-mail, or print and fax the information.
10. Proceed to "Setting Up the Backup Software" on page 10.

Mac OS X v10.2.8+

IMPORTANT - Macintosh users only: You must reinitialize the Western Digital drive to HFS Extended format (or other Mac OS drive formats) prior to using the installation CD. Skip to page 8 to connect the unit; then follow the steps below to format and set up the drive.

1. To format or reinitialize the drive, select **Applications > Utilities > Disk Utility**. Select your new drive on the left panel and click on the **Erase** tab on the right. The following window displays:



2. Select **Mac OS Extended** from the **Volume Format** menu and enter a name for your drive in the field.
3. Click **Erase** to begin drive format. A hard drive icon with the name you assigned will appear on the desktop after the formatting process is completed.

Note: To partition the drive into multiple volumes for use as both a bootable backup drive and also for general storage, select the **Partition** tab from the Disk Utility program menu and follow the instructions to create two separate partitions. Your newly formatted drive is ready to use.

4. Insert the installation CD into your CD-ROM drive.
- Note:** For Mac OS X and later, you may need to provide your administrative password to install Retrospect Express and all the necessary drivers for the unit.
5. A CD icon named Retrospect Express will appear on the desktop screen. Double-click on the CD icon to access its contents. Double-click on the Retrospect Express Installer icon to begin setup.
 6. Click the button to accept the license agreement in the next window and follow the on-screen instructions to complete the wizard. After the installation is complete, go to the **Applications** folder and launch Retrospect Express.
 7. Retrospect Express will ask you to personalize your software copy. Complete the fields for your name and organization. Accept the included license code, and click **OK**.
 8. In the next screen, you will be prompted to register Retrospect Express. Select **Register Now** to complete the registration information and click either the option to e-mail, or print and fax the information.
 9. Proceed to "Setting Up the Backup Software" on page 10.

3

Connecting the Drive

Caution: Do not drop or jolt the unit or attempt to open the unit and service it yourself. These actions will void the warranty.

Note: To determine whether your system supports USB 2.0, see "USB Information" on page 20.

1. Connect one end of the power cord into the DC power supply socket located on the back of the unit (Figure 1).
2. Connect the other end of the AC adapter to the electrical cord. Plug the electrical cord into an electrical outlet.
3. Connect one end of the USB 2.0 interface cable to the USB 2.0 port located on the back of the unit (Figure 1).
4. Connect the other end of the USB 2.0 interface cable to an available USB 2.0 or USB 1.1 port on your computer. USB 2.0 provides much greater performance than USB 1.1.

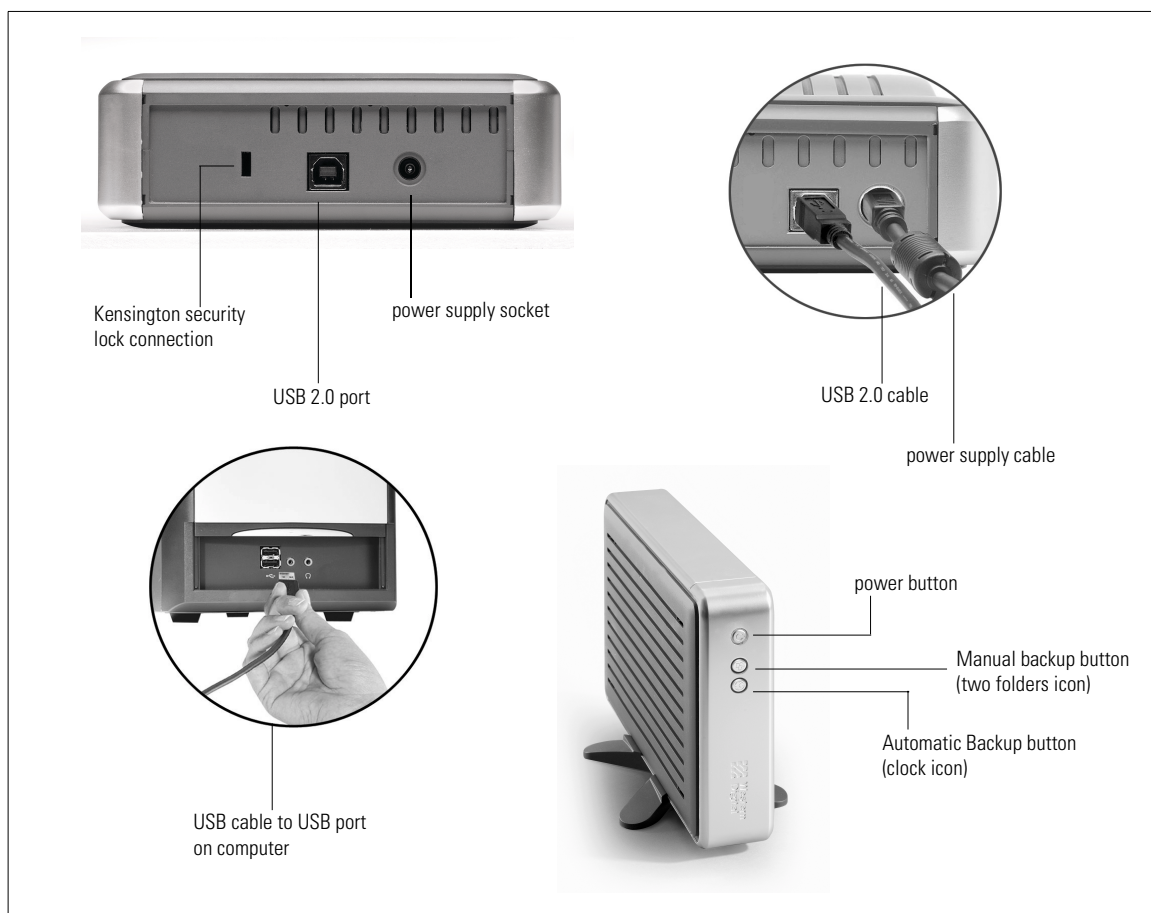
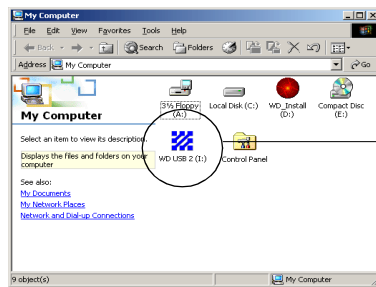


Figure 1

5. Press the power button to turn on the unit. Your operating system will automatically detect the external USB drive. The area around the power button will illuminate blue and will flash to indicate drive activity.

6. A new hard drive icon will appear in the My Computer window for PC users or on your desktop for Mac users. Your drive is preformatted as a single FAT32 partition and is now ready to use. Proceed to "Setting Up the Backup Software" on page 10.



New hard drive icon

Formatting the Drive

The WD Dual-option USB external hard drive is preformatted as a single FAT32 partition for compatibility with all Windows operating systems. The FAT32 file system has a maximum file transfer of 4 GB and cannot create partitions larger than 32GB. Windows XP and 2000 users can overcome these file size limitations by reformatting the drive to the NTFS file system using the Disk Management utility. Windows 98 and Me do not support NTFS. For further instructions, refer to your operating system manual or visit support.wdc.com and download the WD knowledge base article ID# 1053 for Windows 2000 or ID# 1021 for Windows XP.

Using Safe Shutdown™

WARNING: Close all active applications before shutting down the drive to prevent data loss.

Safe Shutdown is a WD-exclusive feature that ensures that all your data has been safely transferred before shutting down the drive. If the drive is idle or has not been used for 10 minutes, the drive will spin down to save energy while keeping the case cool.

1. To shut down the unit, press the power button once. You will hear the drive power down and the power light will turn off. If there are active windows open, a dialog box will appear prompting you to either continue or cancel shutdown.
2. The drive has now been properly shut down, and you can safely disconnect the unit. You do not have to follow the procedures from "Disconnecting the Unit" on page 18.

Note: The unit can be "forced" to shut down by pressing the power button for 4 seconds.

WD Button Manager

The WD Button Manager application manages the dual-option backup functionality. The icon in the system tray (typically located on the bottom right-hand corner of your desktop screen) turns blue. When the unit is powered off or disconnected from your system, the icon will disappear. When the unit is having problems communicating with the backup software, the icon will turn red.

WD Button Manager
system tray icon

4

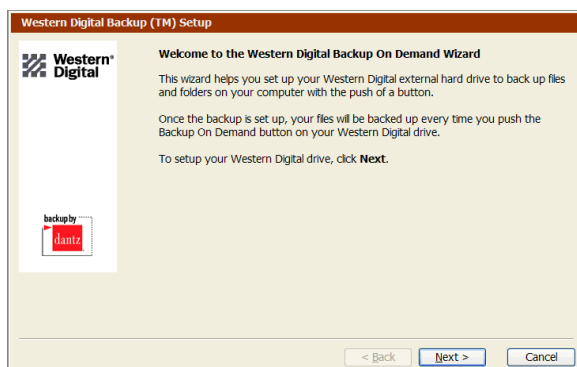
Using the Backup Software

The following are instructions for both Windows and Macintosh to set up your WD Dual-option Backup USB hard drive with Dantz Retrospect Express backup software.

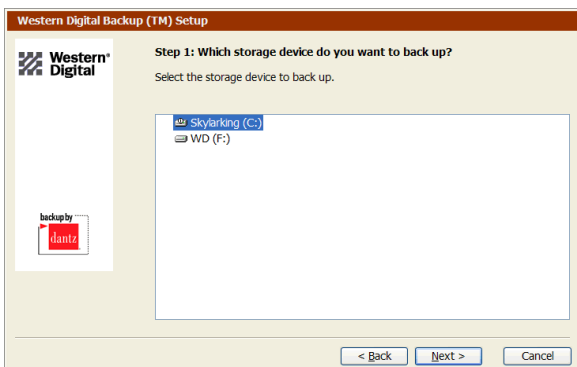
Note: Retrospect Express is designed to duplicate your selected files for easy and convenient backup. The software does not create backup images of your drive. For complete backup and restoration of your system drive, you must first create a Disaster Recovery CD. For more information, refer to the Retrospect Express User's Guide located on the installation CD.

Manual Backup (Backup on Demand)

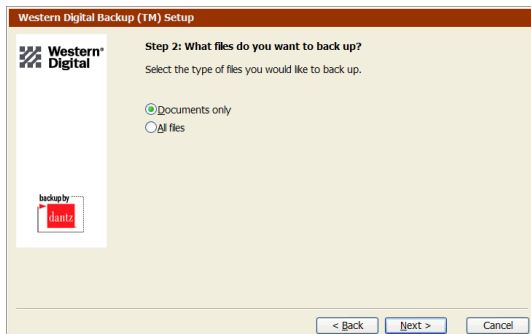
1. Press the **Backup On Demand** button on the front of the unit to launch the initial setup wizard. Click **Next**.



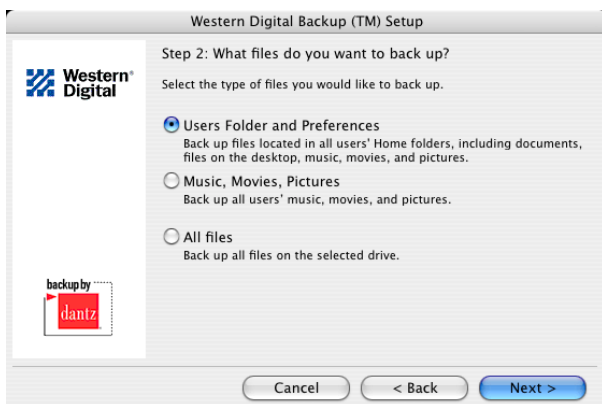
2. Click on the storage drive you want to back up. This is the source drive that Retrospect Express will back up every time you press the **Backup On Demand** button. Click **Next**.



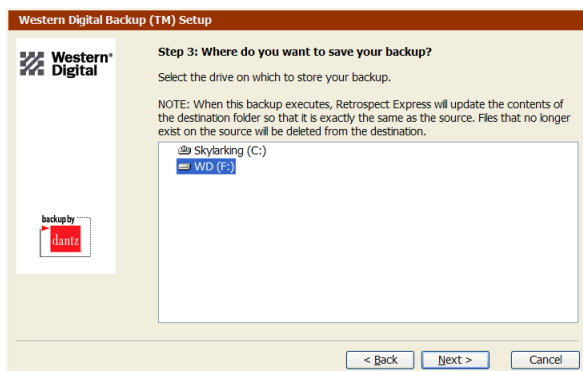
3. *Windows users and Mac OS 9.x users:* By default, the software will copy **Documents Only** which includes your contacts, work documents, music, and pictures. This is the ideal choice for most users. The **All Files** option will copy all files including the operating system and all application files, in addition to your documents. Make your selection and click **Next**.



Mac OS X users only: You may select the type of files to back up in the following window. Make your selection and click **Next**.

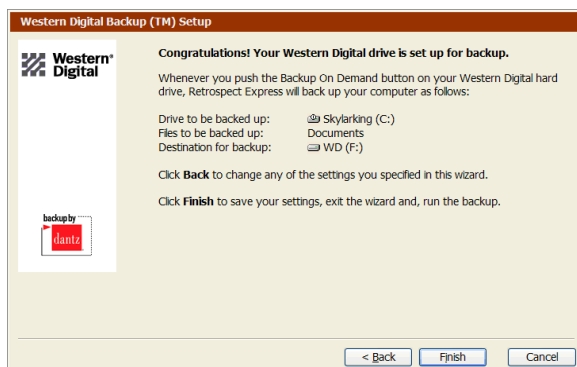


4. Select the drive on which to store your backup files. If you have multiple external drives connected, the drive on which the button was pressed defaults as the destination. Click **Next**.



Note: The destination cannot be the same drive selected as the source drive for backup in step 2. Retrospect Express will not let you proceed until you choose a different destination volume.

5. The last window summarizes the settings you specified in the Backup On Demand wizard. If you need to make any changes, click **Back**. Otherwise, click **Finish** to complete the wizard and begin your first backup. Every time you press the **Backup On Demand** button, Retrospect Express will launch the wizard and back up your data.



Changing Your Manual Backup Settings

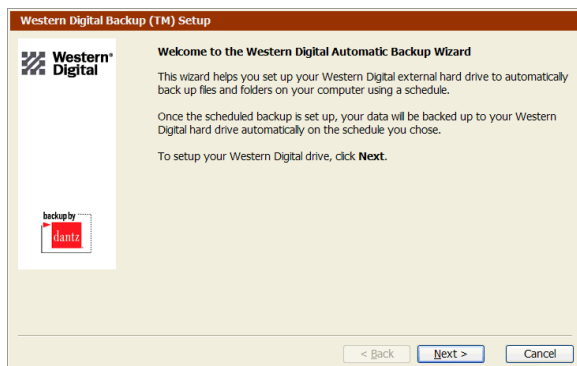
Follow the steps below if you want to change your Backup On Demand settings.

1. Press the **Backup On Demand** button.
2. The wizard displays a summary of your existing choices and gives you a ten second countdown to accept the settings or click **Modify** to change your settings. Clicking **Modify** will take you through the Backup On Demand wizard to make your desired changes.

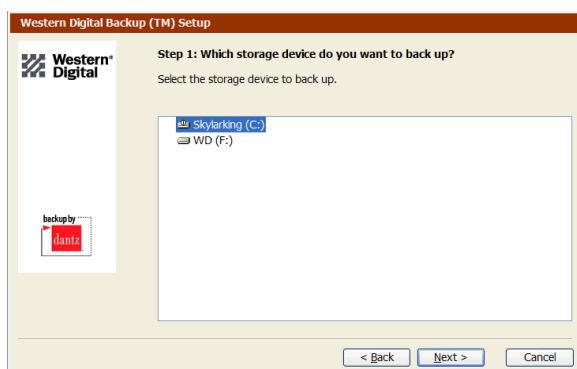
Note: See the preceding "Backup On Demand" section for more details.

Automatic Backup

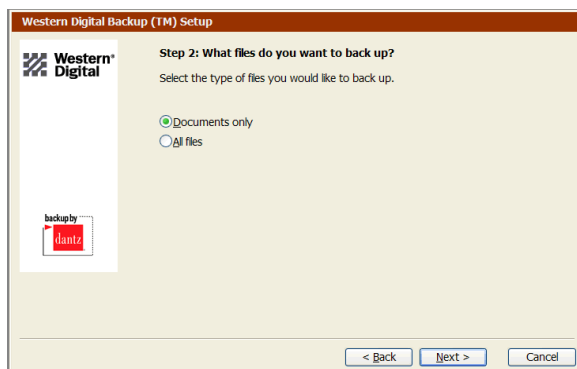
1. Press the **Automatic Backup** button on the front of the unit to launch the initial setup wizard. Click **Next**.



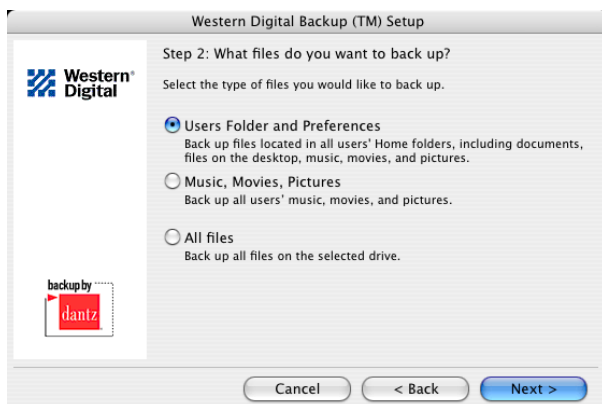
2. Click on the storage drive you want to back up. This is the source drive that Retrospect Express will back up every time the automatic backup begins. Click **Next**.



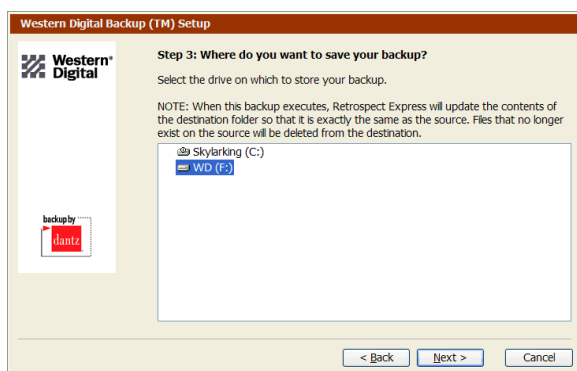
3. *Windows and Mac OS 9.x users:* By default, the software will copy **Documents Only** which includes your contacts, work documents, music, and pictures. This is the ideal choice for most users. The **All Files** option will copy all files including the operating system and all application files in addition to your documents. Make your desired choice and click **Next**.



Mac OS X users only: You may select the type of files to back up in the following window. Make your selection and click **Next**.

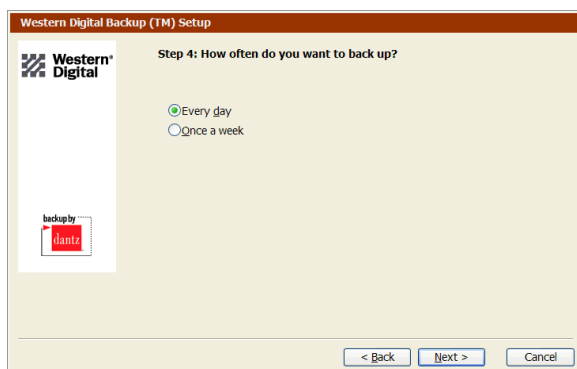


4. Select the drive on which to store your backup files. If you have multiple external drives connected, the drive on which the button was pressed defaults as the destination. Click **Next**.

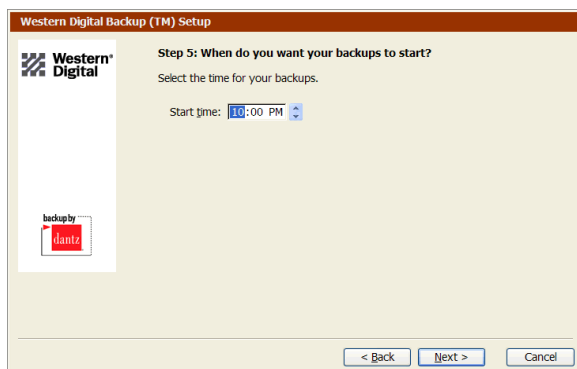


Note: The destination cannot be the same drive selected as the source drive for backup in step 2. Retrospect Express will not let you proceed until you choose a different destination volume.

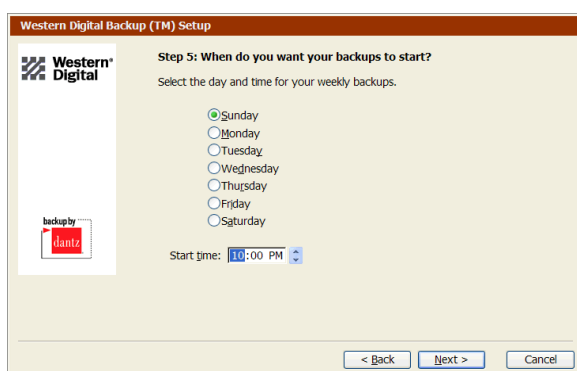
5. Select how often you want to back up. Choose **Every day** or **Once a week** depending on your preference and click **Next**.



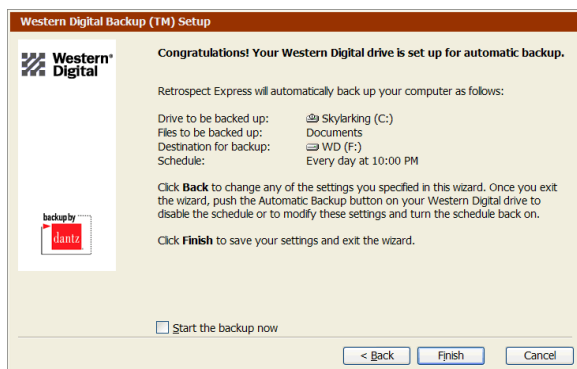
6. If you choose **Every day**, specify the time for your backups.



7. If you choose **Once a week**, select both the day and time you want your backups to occur. Click **Next**.



8. The last window summarizes the settings you specified in the Automatic Backup wizard. If you need to make any changes, click **Back**. If you wish to start your first backup now, select **Start the backup now**. Click **Finish** to complete the wizard. Your Automatic Backup button is now illuminated blue, indicating that your backups are scheduled to occur automatically.



IMPORTANT: Both the source and destination drive must be kept powered on for the automatic backups to occur at their scheduled times. You may have to modify your power management settings in your operating system.

Changing Your Automatic Backup Settings

Follow the steps below if you want to edit your Automatic Backup settings, disable Automatic Backup, or enable a previously set up Automatic Backup that is currently disabled.

1. Press the **Automatic Backup** button. The Automatic Backup button LED will immediately begin to flash indicating that a change is in progress.
2. The wizard displays a summary of your existing choices and gives you a ten second countdown. Depending on your current settings, it will either automatically Disable or Enable the Automatic Backup.
3. To change your existing Automatic Backup settings, click **Modify** to go back through the wizard to make your desired changes. Once you have made your selected changes or the timer has expired, the LED will stop flashing and remain lit if the automatic backup is scheduled.

Note: See "Automatic Backup" in the preceding section for more details.

Restoring Files From a Backup

Windows

1. Open the My Computer window and select the hard drive icon containing your backup.
2. Open the Retrospect Backup folder and open the folder named Backup of <Your Hard Drive Name>. You can now select any file or folder and drag and drop the files to where you want to restore them.

Note: If you are uncertain of the location of a file on your hard drive, use **Windows Search** (Start > Search > For Files or Folders) to search for the files.

Macintosh

1. Select the hard drive containing your backup files.
2. Open the Retrospect Backup folder and open the folder named Backup of <Your Hard Drive Name>. You can now select any file or folder and drag and drop the files to where you want to restore them.

Note: If you are uncertain of the location of a file on your hard drive, use **Finder's Find File** or **Sherlock** to search for the files.

Additional Features of Retrospect Express

Retrospect Express includes additional features that are not integrated into the Western Digital backup wizards. To learn more about the advanced features of Retrospect Express, refer to the electronic Retrospect Express User's Guide included on the Western Digital installation CD.

5

Positioning the Drive

IMPORTANT: The drive stands and feet are provided for specific configurations and usage. For a single external drive, WD recommends using the drive stands for vertical placement with the power button on top for easy accessibility. For stacking multiple drives, use the feet for horizontal placement.

Installing the Drive Stands for Vertical Placement

1. Power off the external hard drive and disconnect all its cables.
2. Align the edge of a drive stand onto the side of the unit adjacent to the UPC code label (Figure 2a).
3. Press the other edge of the drive stand towards the drive until the stand snaps firmly into place.

Note: Be sure to space both drive stands approximately 3 - 4 inches apart and approximately 2 - 3 inches from the edge of the drive for maximum balance and stability.

4. Repeat this process for the other stand.

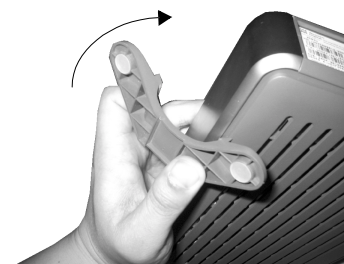


Figure 2a

Removing the Stands

1. Power off the external hard drive and disconnect all its cables.
2. Place the unit upside down on a clean and steady surface.
3. Using both hands, grasp the base of the stand and carefully bend the stand upwards until the stand snaps away from the side of the unit (Figure 2b).
4. Repeat this process for the other stand.

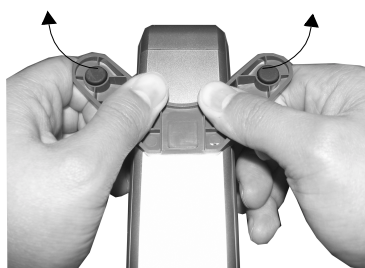


Figure 2b

Installing the Feet for Horizontal Placement

1. Power off the external hard drive and disconnect all its cables.
2. Place the unit upside down on a clean and steady surface.
3. The back of the drive is keyed with a small crossbar at each corner of the unit within the ventilation slots for feet placement.
4. Align the notch of the foot to the crossbar and insert one end of the foot into the ventilation slot at a slight angle (Figure 3). The feet are keyed to ensure proper insertion.
5. Press the foot into the groove until it snaps firmly into place.
6. Repeat this process for the remaining feet.



Figure 3

Removing the Feet

1. Power off the external hard drive and disconnect all its cables.
2. Place the unit upside down on a clean and steady surface.
3. Carefully dislodge the foot by firmly pushing it off from the ventilation slot.
4. Repeat this process for the remaining feet.

6

Disconnecting the Drive

IMPORTANT: If you pressed the Safe Shutdown power button discussed on page 9, you do not need to follow the steps below. The instructions below are provided as an alternate to disconnecting the external drive.

Windows XP, Windows 2000, or Windows Me

Note: If the power button has already been pressed, the Unplug or Eject Hardware window will no longer display the drive.

1. Close all windows and open applications associated with the unit. Failure to do so may result in data loss.
2. Double-click on the Windows **Unplug or Eject Hardware** icon in your system tray (typically located in the bottom right corner of your screen—see the dialog box below for a depiction of this icon). The following dialog box displays:

Unplug or Eject Hardware system tray icon



3. Select **USB Mass Storage Device** from the list and click **Stop**. Click **OK** to confirm your selection of the drive to be disconnected.

Note: If you have other USB devices (such as a portable flash drive) connected to your computer, there may be multiple listings of **USB Mass Storage Device**. Be sure to select the correct device associated with your WD external USB hard drive.

4. You can now safely disconnect the USB interface cable from your computer and the power supply cable from the electrical outlet.

Windows 98SE

1. Right-click on the WD Button Manager icon in the system tray (typically located on the bottom right corner of your screen).
2. Select the option to safely remove the unit from your system and click **OK** to confirm.
3. You can now safely disconnect the USB interface cable from your computer and the power supply cable from the electrical outlet.

Macintosh

1. Close all windows and open applications associated with the external drive. Failure to do so may result in data loss.
2. Find the **Removable Disk(s)** icon associated with the interface you wish to disconnect and drag it to the **Trash** icon on your desktop.
3. After the disk icon has disappeared from the desktop, you may now safely disconnect the USB interface cable from your computer and the power supply cable from the electrical outlet.

Removing Retrospect Express

Note: For more information regarding removing Retrospect Express software or other installation drivers associated with your external USB drive, visit support.wdc.com.

1. To remove the backup software, go to **Start > Settings > Control Panel**.
2. Double-click on the **Add/Remove Programs** icon from the menu.
3. Select **Retrospect 6.5** from the list and click **Remove**.

Removing WD Button Manager

1. To remove the drivers for the external hard drive, select **WD USB Mass Storage Driver Installation** from the list and click **Remove**. Click **Yes** to proceed and follow the on-screen instructions to complete the uninstall.
2. To remove the WD Button Manager program from your system, right-click on the WD icon in the system tray (located on the bottom right corner of the screen) and select **Uninstall Button Manager** from the popup menu. Click **OK** to proceed with the uninstall.



7

Troubleshooting

To search the Western Digital technical support knowledge base and view a complete list of FAQs for your operating system, visit our support Web site at support.wdc.com.

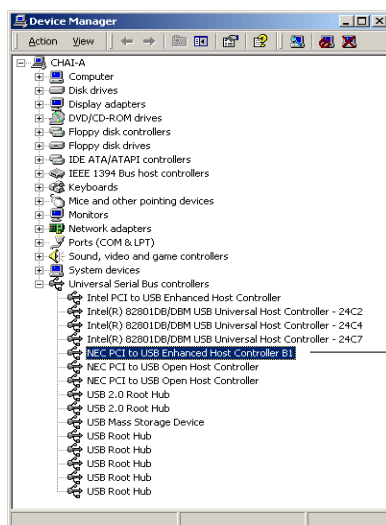
Frequently Asked Questions - USB Information

Q: What is Hi-Speed USB?

A: Hi-Speed USB is an alternative name for USB 2.0 and provides transfer rate speeds of up to 40 times faster than USB 1.1. Upgrading to USB 2.0 is highly recommended because of the significant reduction in file transfer time versus USB 1.1.

Q: How do I determine if my system supports USB 2.0?

A: Go to your system Device Manager (Right-click on **My Computer** icon > **Properties** > **Hardware** > **Device Manager**). Click on Universal Serial Bus controllers and look for a driver that displays an Enhanced USB Host Controller as shown below:



Enhanced USB Host Controller

If your Device Manager shows an **Enhanced USB Host Controller**, the system has High Speed USB (USB 2.0) capability. The important term is *enhanced*, which indicates that your system supports USB 2.0.

Note: If your USB 2.0 controller is built-in to your system's motherboard, be sure you have installed the appropriate chipset support for your motherboard. Refer to your motherboard or system manual for more information.

Q: What will happen if a USB 2.0 device is plugged into a USB 1.1 port or hub?

A: USB 2.0 is backwards compatible with USB 1.1. If connected to USB 1.1 port or hub, the USB 2.0 device will operate at the USB 1.1 full speed of up to 12 Mbps.

Q: Can USB 1.1 cables be used with USB 2.0 devices?

A: Although USB 1.1 cables work with USB 2.0 devices, it is recommended that USB 2.0 certified cables be used with USB 2.0 peripherals and USB 2.0 PCI adapter cards.

Frequently Asked Questions - Installation

To search the Western Digital technical support knowledge base and view a complete list of FAQs for your operating system, visit our support Web site at support.wdc.com.

Q: Why does the drive not power up?

A: After connecting the power supply cable, make sure that you press the power button. The area around the button will illuminate blue and you will immediately hear the drive "spin" and power up.

Q: Why is the drive not recognized under "My Computer" or the computer desktop.

A: If your system has a USB 2.0 PCI adapter card, make sure that its drivers have been installed prior to connecting the Western Digital USB 2.0 external hard drive. The drive will not be correctly recognized if the USB 2.0 root hub and host controller drivers are not already installed. Contact the hardware manufacturer for installation procedures.

Q: How do I partition and reformat the drive?

A: FAT32 partitions created by the utilities included in Windows 2000/XP have a partition size limitation of up to 32 GB. To create partitions greater than 32 GB, you will need to reformat the drive using the NTFS file system.

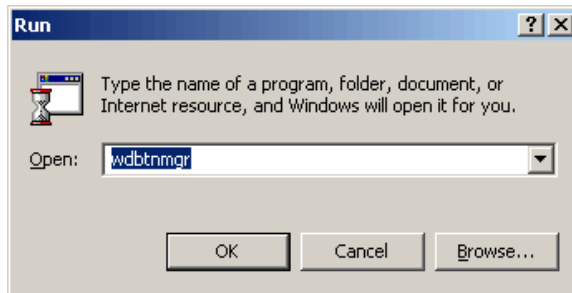
Q: Why is the data transfer rate so slow?

A: Your system may be operating at USB 1.1 speeds. This may be due to incorrect driver installation of your USB 2.0 adapter card or your system may not support USB 2.0.

If your system includes a PCI slot, you can achieve Hi-Speed USB transfer rates by installing a USB 2.0 PCI adapter card. Contact the card manufacturer for installation procedures and more information.

Q: I accidentally uninstalled WD Button Manager. How do I reinstall it?

A: Go to **Start > Run**. Type **wdbtnmgr** in the open field to load WD Button Manager.



WD Service and Support

If you need additional information or help during installation or normal use of this product, visit our product support Web site at *support.wdc.com*.

- **Warranty Services** - Obtain warranty information, warranty status, extended warranty, product replacement, RMA status and shipping and packaging information.
- **Downloads Library** - Download installation software and drivers.
- **Technical Information** - Access product specifications, technical tips, and the online forum.
- **Knowledge Base** - Explore our expert knowledge base and Frequently Asked Questions.
- **Service and Support Options** - Look up available service and support options in your region.
- **Contact Support** - Contact a support representative by e-mail.

Appendix

Regulatory Compliance

This appendix contains information on the following topics:

- Agency Approvals
- Radio Frequency Interference Statement
- Warranty Information

Agency Approvals

Western Digital hard drives meet the standards of the following regulatory agencies:

Federal Communication Commission (FCC)

Verified to comply with FCC Rules for Radiated and Conducted Emission, Part 15, Subpart B, for Class B Equipment.

Underwriters Laboratories (UL)

UL-Standard 1950, Standard for Safety of Information Technology Equipment including Electrical Business Equipment (File E101559).

Canadian Standards Association (CSA)

CSA-Standard C22.2, No. 950-95, Standard for Safety of Information Technology Equipment including Electrical Business Equipment (File LR68850).

TUV Essen Laboratories

IEC-950 (EN60950) Standard for Safety of Information Technology Equipment including Electrical Business Equipment.

CE Compliance For Europe

Verified to comply with EN55022:1998 for RF Emissions and EN55024:1998 for Generic Immunity as applicable.

Radio Frequency Interference Statement

FCC Notice

This Western Digital product has been verified to comply with the limits for a Class B computing device pursuant to Part 15, Subpart B of FCC rules. This does not guarantee that interference will not occur in individual installations. Western Digital is not responsible for any television, radio, or other interference caused by unauthorized modifications to this product.

If interference problems do occur, consult the system equipment owner's manual for suggestions. These suggestions may include relocation of the computer system away from the television or radio, or placing the computer AC power connection on a different circuit or outlet.

CSA Notice

Le prent appareil numérique n'émet pas de bruits radioélectriques dépassant les limites applicables aux appareils numériques de la classe B prescrites dans le Règlement sur le brouillage radioélectrique édicté par le ministère des Communications du Canada.

This digital apparatus does not exceed the Class B limits for radio noise for digital apparatus set out in the Radio Interference Regulations of the Canadian Department of Communications.

Warranty Information

This product contains no user-servicable parts. Refer servicing to authorized WD personnel or an authorized WD service center only.

Obtaining Service

Western Digital (WD) values your business and always attempts to provide you the very best of service. If this Product requires maintenance, either contact the dealer from whom you originally purchased the Product or visit our product support Web site at support.wdc.com for information on how to obtain service or a Return Material Authorization (RMA). If it is determined that the Product may be defective, you will be given an RMA number and instructions for Product return. An unauthorized return (i.e., one for which an RMA number has not been issued) will be returned to you at your expense. Authorized returns must be shipped in an approved shipping container, prepaid and insured, to the address provided on your return paperwork. Your original box and packaging materials should be kept for storing or shipping your Western Digital product. Your warranty will be void if your returned hard drive is shipped in anything other than the original packaging or Western Digital approved materials. To conclusively establish the period of warranty, check the warranty expiration (serial number required) via support.wdc.com. WD shall have no liability for lost data, regardless of the cause, recovery of lost data, or data contained in any Product placed in its possession.

One-Year Limited Warranty

WD warrants that the Product, in the course of its normal use, will be free from defects in material and workmanship for a period of one (1) year and will conform to WD's specification therefor. This limited warranty period shall commence on the purchase date appearing on your purchase receipt. WD shall have no liability for any Product returned if WD determines that the Product was stolen from WD or that the asserted defect a) is not present, b) cannot reasonably be rectified because of damage occurring before WD receives the Product, or c) is attributable to misuse, improper installation, alteration (including removing or obliterating labels and opening or removing external covers, unless authorized to do so by Western Digital or an authorized service center), accident or mishandling while in the possession of someone other than WD. Subject to the limitations specified above, your sole and exclusive warranty shall be, during the period of warranty specified above and at WD's option, the repair or replacement of the Product. The foregoing warranty of WD shall extend to repaired or replaced Products for the balance of the applicable period of the original warranty or ninety (90) days from the date of shipment of a repaired or replaced Product, whichever is longer.

The foregoing limited warranty is WD's sole warranty and is applicable only to products sold as new. The remedies provided herein are in lieu of a) any and all other remedies and warranties, whether expressed, implied or statutory, including but not limited to, any implied warranty of merchantability or fitness for a particular purpose, and b) any and all obligations and liabilities of WD for damages including, but not limited to accidental, consequential, or special damages, or any financial loss, lost profits or expenses, or lost data arising out of or in connection with the purchase, use or performance of the Product, even if WD has been advised of the possibility of such damages. In the United States, some states do not allow exclusion or limitations of incidental or consequential damages, so the limitations above may not apply to you. This warranty gives you specific legal rights, and you may also have other rights which vary from state to state.